

***The power of water-based
technology for better clinical
outcomes in minimally
invasive spine surgery***

**SpineJet® XL
HydroSurgery System**

***Advancing fusion
disc preparation***

Technology advancing fusion disc preparation

Effective

- Accesses entire disc space
- Superior disc prep
- Removes **95%** more posterior contralateral nucleus than conventional devices*

Safe

- **65%** fewer instrument passes*
- Unique tip design protects against annular penetration

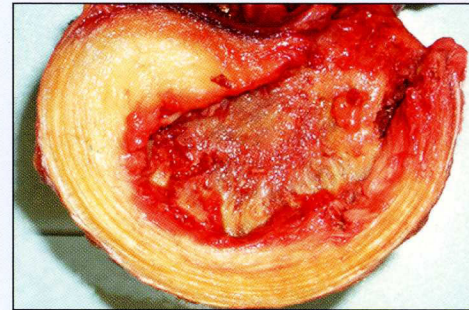
Efficient

- Aspirates as it resects
- **50%** less disc prep time**
- Removes nucleus and cartilage

Reduces risk of:

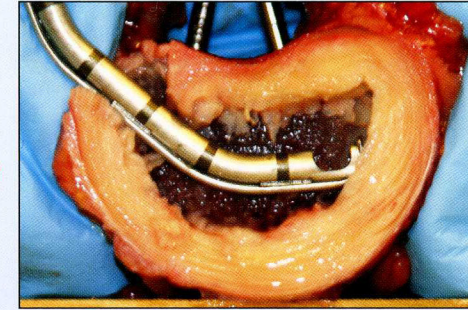
- Surgical Site Infection (SSI)
- Procedure related complications
- Surgical outcome failure and re-operation
- Exposure to occupational hazards
- Cross contamination

Disc space prepared with conventional tools



VS.

Disc space prepared with SpineJet XL



Measurement *	Standard Tools	SpineJet XL	Benefit
Instrument Passes	102	36	65% Fewer Passes
% Contralateral Tissue Removed	45%	88%	95% More Contralateral Tissue Removed
% Endplate Preparation	70%	86%	23% Greater Surface Area Prepared
% Damaged Endplates	56%	23%	59% Fewer Damaged Endplates
Average Disk Prep Time	17.8 min	9.3 min	50% Time Savings

"This single, elegant device accomplishes what it used to take three or four instruments to do, thus empowering us to perform truly MIS fusion procedures that lead to improved clinical outcomes."

Larry Khoo, M.D.
Co-Director

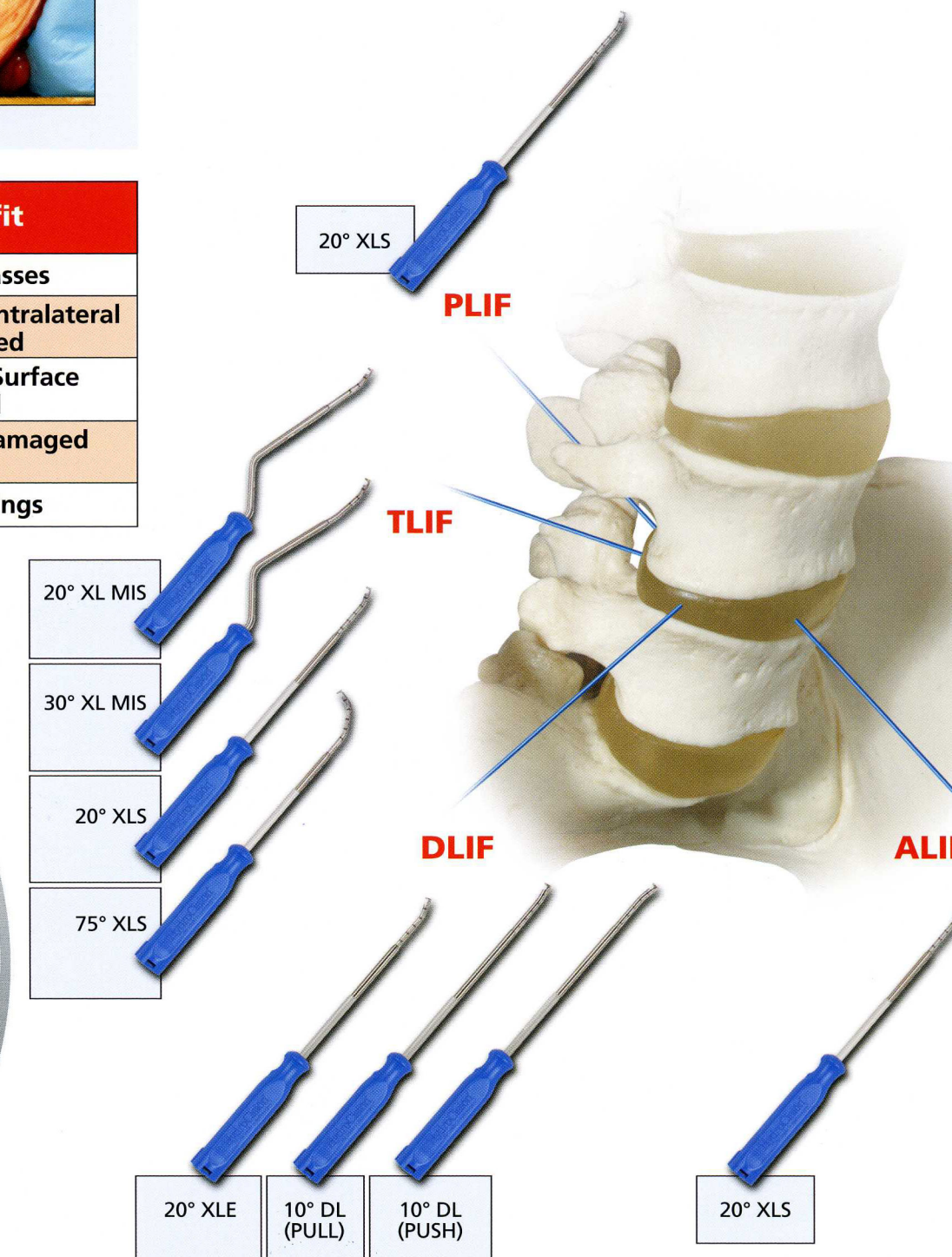
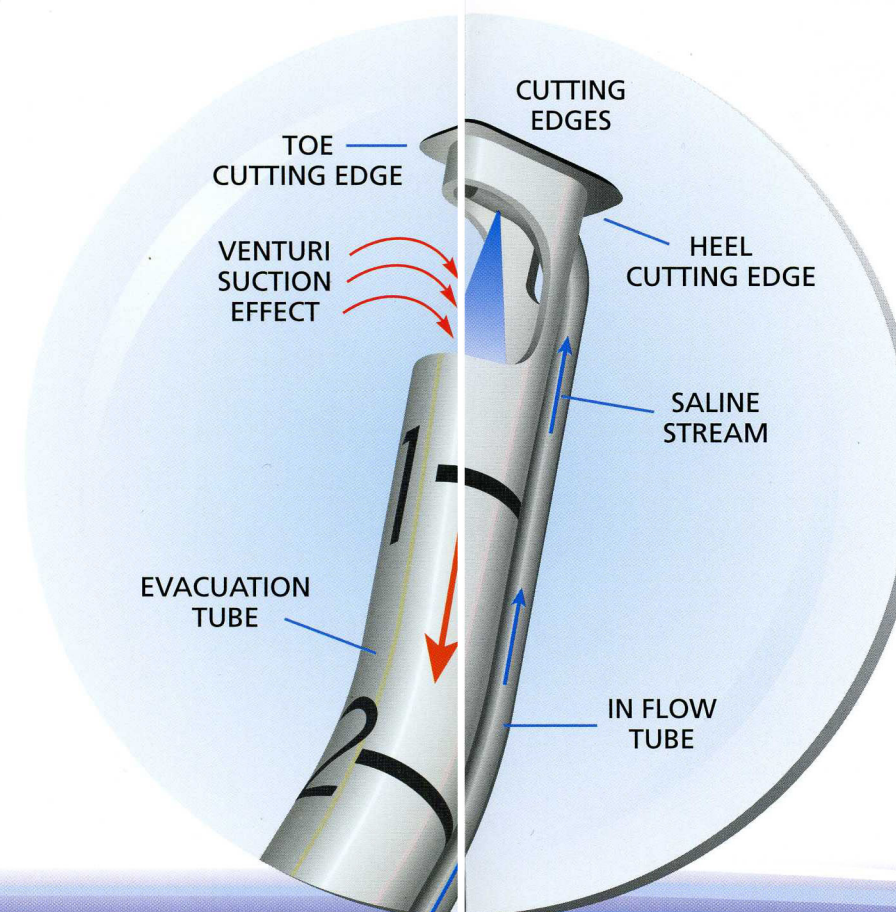
Comprehensive Spine Center, Division of Neurosurgery
UCLA Medical Center - Los Angeles, CA

"With minimal passes into and out of the disc space, The SpineJet XL more effectively removes disc material, optimizing the environment for lumbar interbody fusion."

Mitchell A. Hardenbrook, M.D.
Orthopedic Spine Surgeon
Boston Spine Group - Boston, MA

*Cadaver studies. Data on file. **User reports. Data on file.

Instrument versatility for all spinal approaches





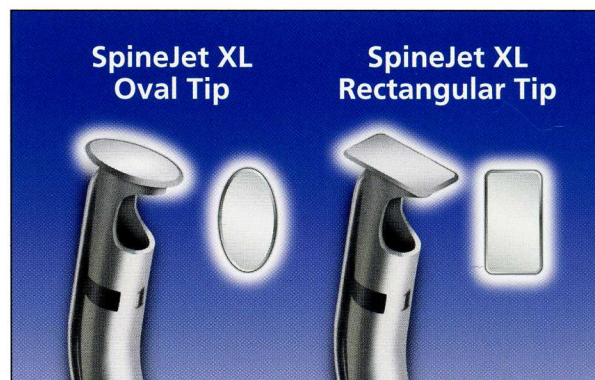
SpineJet XL Fusion Handpiece Specifications

Description	Catalog Number	Procedure(s)	Working Shaft Length	Cutting Edge Width	Cutting Edge Height	Shaft Type	Tip Type
20° XLS	57662	Open TLIF/PLIF/ALIF	20 cm	7.1 mm	3.8 mm	Straight	Rectangular
75° XLS	57667	Open TLIF	18.4 cm	7.1 mm	3.8 mm	Straight	Rectangular
20° XLS	57162	Open TLIF/PLIF/ALIF	20 cm	7.1 mm	3.8 mm	Straight	Oval
75° XLS	57167	Open TLIF	18.4 cm	7.1 mm	3.8 mm	Straight	Oval
20° XL MIS	58662	MISTLIF/PLIF	19.5 cm	7.1 mm	3.8 mm	Bayonet	Rectangular
30° XL MIS	58663	MISTLIF	19.4 cm	7.1 mm	3.8 mm	Bayonet	Rectangular
20° XL MIS	58162	MISTLIF/PLIF	19.5 cm	7.1 mm	3.8 mm	Bayonet	Oval
30° XL MIS	58163	MISTLIF	19.4 cm	7.1 mm	3.8 mm	Bayonet	Oval
20° XLE	59662	DLIF	22.5 cm	7.1 mm	3.8 mm	Straight	Rectangular
10° DL (pull)	59961	DLIF	22.5 cm	7.1 mm	3.8 mm	Straight	Oval
10° DL (push)	59971	DLIF	22.5 cm	7.1 mm	3.8 mm	Straight	Oval

All products are disposable, single use, supplied sterile.

SpineJet XL Fusion Accessories

Description	Catalog Number
SpineJet XL Quick Connect* (Single use, supplied sterile, for use with all Blue handle handpieces)	55500
SpineJet QuickKart HydroSurgery System (Includes SpineJet HydroSurgery Console and QuickKart Procedure Cart)	50370
SpineJet XL Console (Console includes Foot Pedal and Power Cord)	52700
QuickKart Procedure Cart	50300
*Blue SpineJet XL Quick Connect must be used with all fusion handpieces. Note, color of Quick Connect must match the color of the handpiece handle.	



All disposable products must be ordered separately.

HydroCision, SpineJet, and The Leader in HydroSurgery are registered trademarks of HydroCision, Inc.
©2004-2006. All rights reserved. Patent No.6,375,635, 6,960,182, 6,923,792, 7,122,017 other US and Foreign Patents Pending.
P/N 1000-2378 Rev B 04/09 TG-9904

HydroCision
Customer Care Line
888.747.4470

Call Toll Free for Product Support

267 Boston Road, Suite 28
North Billerica, MA 01862-2336

Tel. 888.747.4470

Fax 978.600.5058

Email: info@hydrocision.com

www.hydrocision.com