

HydroCision® turns water into a surgical tool

HydroCision SpineJet XL is:

Safe

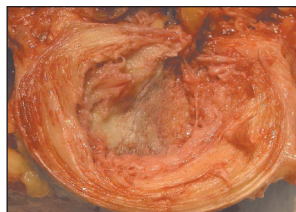
- 65% fewer instrument passes*
- Unique tip design protects against annular penetration

Fast

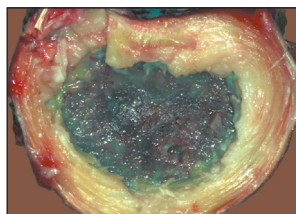
- Aspirates as it resects
- 50% less disc prep time**
- Removes nucleus and cartilage

Effective

- Accesses entire disc space
- Superior disc prep
- Removes 95% more posterior contralateral nucleus than conventional devices*



Endplate prepared with conventional tools



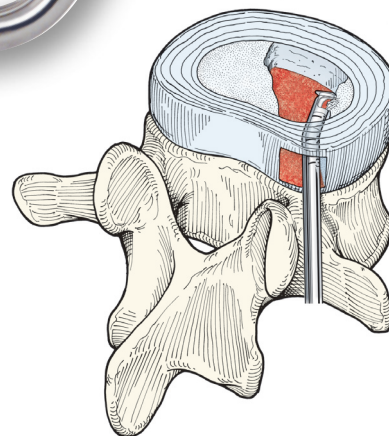
Endplate prepared with SpineJet XL

20°XL MIS
(see back for additional models)

XL MIS
Bayonet Shaft

XL MIS
Handle

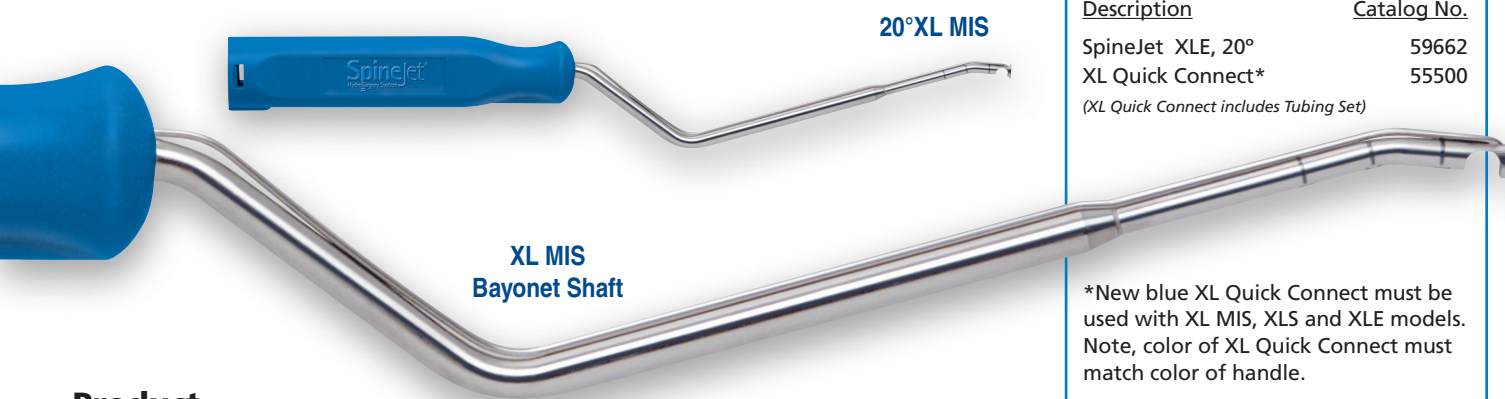
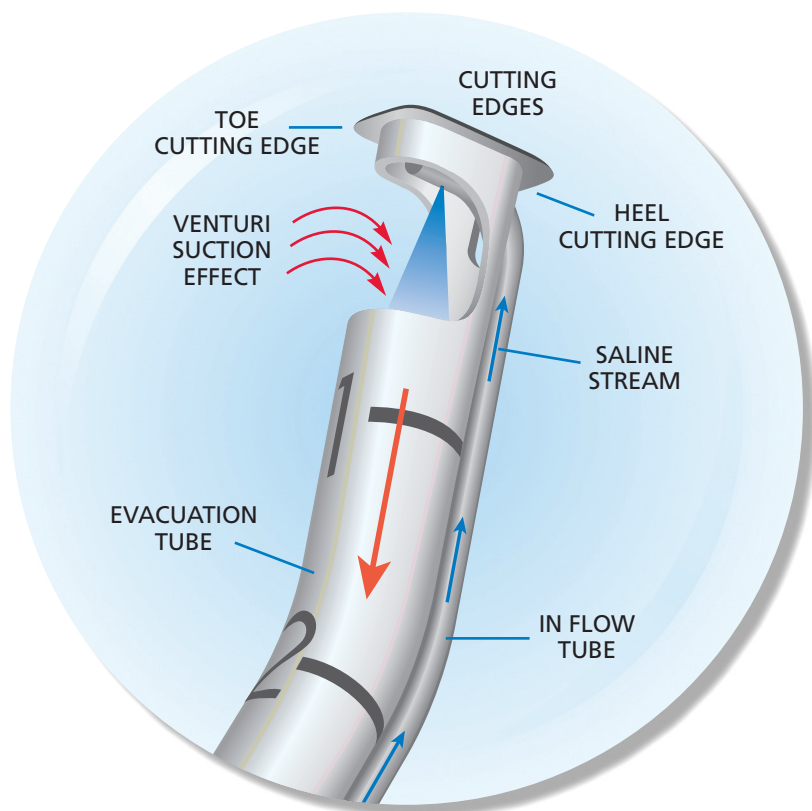
Shown 75% of
Actual Size



"Reduced number of passes...more effective removal of disc material, thus optimizing the environment for lumbar interbody fusion."

Mitchell Hardenbrook, M.D.

*Cadaver studies. Data on file.
**User reports. Data on file.



Product Specifications

Specification	75° XLS (57667)	20° XLS (57662)	20° XLE (59662)	20° XL MIS (58662)	30° XL MIS (58663)
Shaft Length	18.4 cm	20 cm	22.5 cm	19.5 cm	19.4 cm
Cutting Edge Width	7.1 mm	7.1 mm	7.1 mm	7.1 mm	7.1 mm
Cutting Edge Height	3.8 mm	3.8 mm	3.8 mm	3.8 mm	3.8 mm

HydroCision is a registered trademark of HydroCision, Inc.
SpineJet, SpineJet XL, The Leader in Hydrosurgery, and HydroDrive Technology are trademarks of HydroCision, Inc.
©2004-2006. All rights reserved. Patent No.6,375,635 other US and Foreign Patents Pending. 1000-1921 Rev.B 06/06 TG-8842/2

Ordering Information

SpineJet Hydrosurgery System

Description	Catalog No.
SpineJet Console (Console includes Foot Pedal and Power Cord)	52700

Parts Available by Procedure

MIS TLIF/PLIF (Bayonet Shaft)

Description	Catalog No.
SpineJet XL MIS, 20°	58662
SpineJet XL MIS, 30°	58663
XL Quick Connect*	55500
(XL Quick Connect includes Tubing Set)	

Open TLIF/PLIF (Straight Shaft)

Description	Catalog No.
SpineJet XLS, 20°	57662
SpineJet XLS, 75°	57667
XL Quick Connect*	55500
(XL Quick Connect includes Tubing Set)	

XLE Far Lateral (Straight Shaft)

Description	Catalog No.
SpineJet XLE, 20°	59662
XL Quick Connect*	55500
(XL Quick Connect includes Tubing Set)	

*New blue XL Quick Connect must be used with XL MIS, XLS and XLE models.
Note, color of XL Quick Connect must match color of handle.

HydroCision® Customer Care Line 1.888.747.4470

Call Toll Free for Product Support

22 Linnell Circle, Suite 102
Billerica, MA 01821

Tel. 888.747.4470

Fax 978.600.5058

Email: info@hydrocision.com

www.hydrocision.com